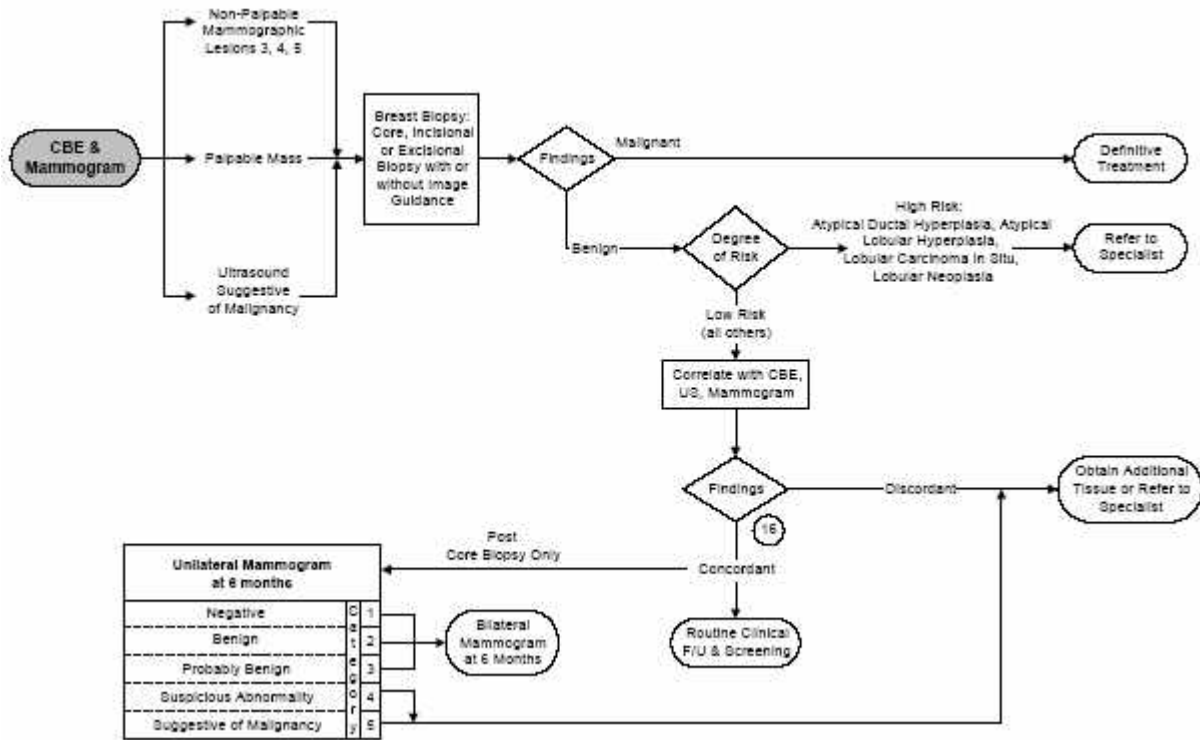


Algoritmo per il comportamento da tenere in seguito ad una risposta istologica

Clinical Breast Protocols Workgroup
 May 2000 Revised Second Edition
 California Department of Health Services, Cancer Detection Section
 Publisher: University of California – Davis
www.sdsu.edu/qap



note all' algoritmo

- 16 Mammography can be performed using a radiopaque marker on the skin over a palpable lesion to help determine if the lesion corresponds to the mammographic lesion. A non-corresponding mammographic finding may represent a separate lesion that needs further work-up.