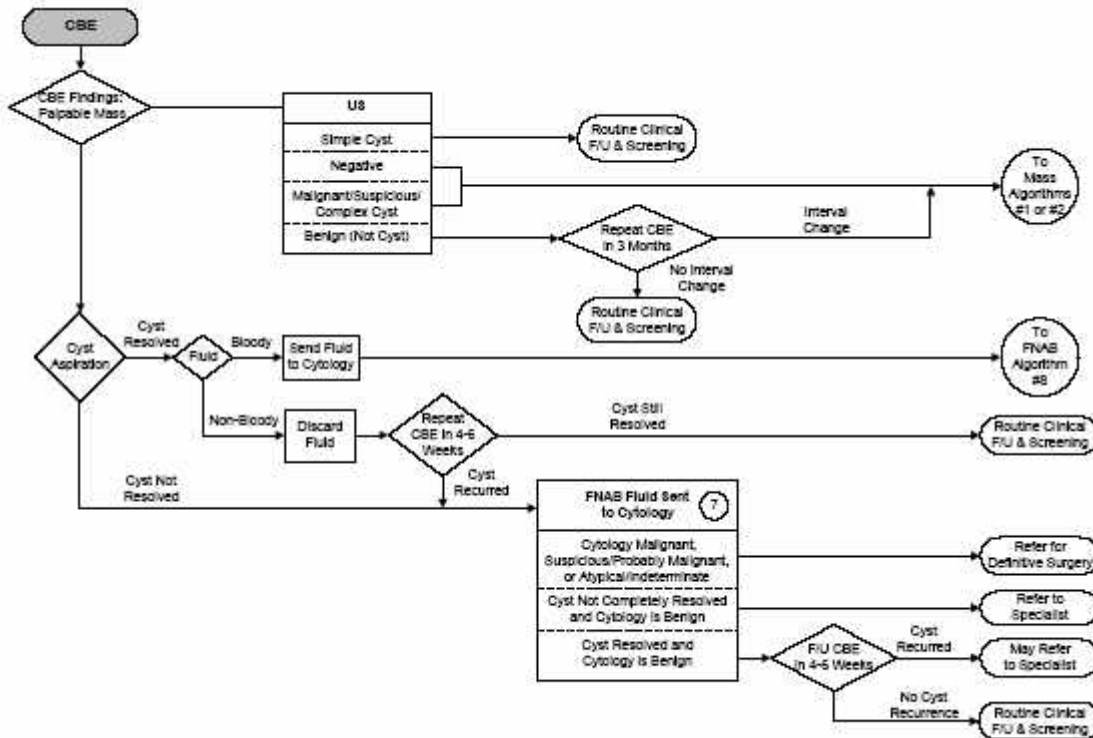


# Algoritmo per una lesione cistica sospetta

Clinical Breast Protocols Workgroup  
 May 2000 Revised Second Edition  
 California Department of Health Services, Cancer Detection Section  
 Publisher: University of California – Davis  
[www.sdsu.edu/qap](http://www.sdsu.edu/qap)



note all' algoritmo

⑦ FNAB implies cytological examination of the cells obtained by aspiration of the lesion using a fine needle (22 gauge or smaller). FNAB should be performed by health professionals trained and experienced in the technique. Likewise, cellular analysis should be interpreted by a pathologist skilled in cytological assessment. If the pathologist reports that the aspiration is inadequate for analysis, the FNAB should be repeated and another biopsy method considered. See further explanations accompanying Algorithm 8.